



International  
House  
London

LEARN ENGLISH

AT IH LONDON

**2024**

Embrace New Opportunities



# LEARN ENGLISH AT IH LONDON

LEARN ENGLISH

PAGES 6-8

BUSINESS ENGLISH & COACHING

PAGES 9-10

EXAM PREPARATION

PAGES 11-17

ACCOMMODATION IN LONDON

PAGES 18-20



## OUR HISTORY

We are International House London. Our story began in 1953 and we are dedicated to providing the best quality English language courses and coaching to students from around the world. Our modern school and exam centre is situated in the heart of vibrant Covent Garden in central London, offers exceptional facilities, classrooms and exam and carries industry-leading accreditations.

## YOUR FUTURE

From your very first day to your last, you'll create treasured memories and unforgettable experiences. With our supportive staff, expert teachers and coaches, you'll develop your skills alongside new friends. Join our daily activity programme to broaden your social network and relax in comfortable student accommodation at the end of each day.

**Embrace new opportunities and start your language learning journey at IH London today.**



## YOUR ENGLISH JOURNEY

### Choose your Course

Get guidance from our multilingual sales team and choose what you want to study.

1

Contact us



Accommodation



2

### Make yourself at Home

Choose from a wide range of accommodation options to suit you and your budget.

### Modern School Facilities

Get to know the school, including 55 air-conditioned classrooms, library, cafe and lounge areas.

3

Virtual Tour



Meet our Teachers



4

### Expert Teachers

Start your lessons with our experienced, friendly CE LTA-trained teachers.

### Coffee Time!

Take time out with your new friends to enjoy a coffee and delicious pastries between lessons.

5

Facilities



Social Programme



6

### Discover London

Join your classmates on daily social activities, cultural and language exchanges and explore London to the full.

### Need an English Qualification?

Prepare for and take an IELTS or Cambridge exam at Europe's largest test centre.

7

IHTA



Foreign Languages



8

### Learn another language!

Join a language exchange to connect with local students or sign up for a Foreign Language course.

### Extra support

Login to the Student Portal, ask for assistance at student hour or book one-to-one lessons to focus on what you need.

9

Student Portal



Testimonials



10

### Graduate!

Embrace new opportunities and share your experience with friends, family and colleagues.



# LOCATION & FACILITIES

Everything London has to offer can be easily reached from our central school.



## OUR SCHOOL

- Fully air-conditioned
- Wheelchair accessible
- 55 spacious classrooms
- Interactive whiteboards
- Library with 10,000+ resources
- Student learning centre
- On-site café
- Social and study spaces
- Wi-fi
- Accommodation services
- 24/7 support

## STUDENT WELFARE TEAM

The Welfare Team are available to assist with personal or emotional concerns while you're at the school. They offer confidential advice and support for various welfare matters. You can reach out to them via phone or email, and there's a 24-hour emergency phone available as well, which you'll find in your welcome pack.

	9	Floor 5: The Executive Centre
	8	Floor 4: One-to-one, small group and large group classrooms
	7	Floor 3: Large group classrooms
	6	Floor 2: Large group classrooms
	5	Floor 1: Large group classrooms
	4	Mezzanine: Exam offices
	3	Upper ground: Library & computer based exam room
	2	Ground: Reception/café
	1	Basement: Teaching resource centre

# THE EXECUTIVE CENTRE

Our specialised executive language training courses cater to busy professionals seeking to enhance their career-focused English skills. These courses are held in our Executive Centre, where clients can study, network and unwind in our private Sky Lounge with stunning London skyline views whilst enjoying complimentary refreshments.

## YOUR PROGRESSION PATHWAY

1

**Choose your Course**  
Get guidance from our multilingual Sales team and choose what you want to study.

Contact us

2

**Needs Analysis**

**Pre-course Preparation**  
A detailed needs analysis and level test means you will be ready to hit the ground running with you bespoke programme from the first session.

3

**The Executive Centre**  
Familiarise yourself with the Executive Centre. Which has intimate classrooms and a Sky Lounge with panoramic views over London.

Virtual Tour

4

**Meet our Teachers**

**Expert Teachers**  
Our expert teachers have the industry knowledge and experience to tailor lessons according to your needs and learning objectives.

5

**Track your progress**  
Receive regular feedback and personalised tips from your teacher to help improve your English and learning experience.

Bespoke Training

6

**Discover London**

**Social Programme**  
Join weekly excursions across London and networking events with other professionals and your trainer.

7

**Extra support**  
Take individual lessons to achieve your learning targets. Focus on what matters to you most.

One-to-one Learning

8

**Testimonials**

**Celebrate your success**  
Apply your new-found skills to your profession and share your experience with friends, family and colleagues.

2

visit [ihlondon.com](http://ihlondon.com) | call +44 (0)20 7611 2427 | email [sales@ihlondon.com](mailto:sales@ihlondon.com)

LEARN IN LONDON

THE EXECUTIVE CENTRE

3



visit [ihlondon.com](http://ihlondon.com) | call +44 (0)20 7611 2427 | email [sales@ihlondon.com](mailto:sales@ihlondon.com)



GENERAL

ENGLISH 25, 20, 15

Improve your English from any level. Choose morning or afternoon classes and study 15, 20 or 25 lessons each week.

COURSE SUMMARY

Language level	A2 (elementary) and above
Course length	From 1 week
Lessons per week	15, 20 or 25 (55 minutes each)
Lesson times	Monday to Friday
15 lessons (am)	09.00 – 12.00
15 lessons (pm)	13.15 – 16.15
20 lessons (am)	09.00 – 12.00 & 12.15 – 13.10
20 lessons (pm)	12.15 – 13.10 & 13.15 – 16.15
25 lessons	09.00 – 12.00 & 13.15 – 15.15
Class size	14 maximum
Age	16 and above
Start dates	Every Monday*
Location:	London

\*excludes UK bank holidays

WHAT WILL I LEARN?

- › Focus on speaking, reading, listening and writing.
- › Enhance your grammar and vocabulary through tailored content by teachers.
- › Improve your practical English through Social Programme activities, like the monthly Language Exchanges, and collaborative exercises in class.
- › Access additional learning materials via the Student Portal.
- › Specialized classes for enhanced communication skills.

Depending on level and availability, students taking 20 and 25 lessons per week will be offered additional special focus classes to further develop their communicative skills, these include:

Special focus topic	
20 lessons	25 lessons
Speaking and grammar	Everyday English
Speaking and writing	Communication and media
Speaking and vocabulary	Research and debate
Speaking and listening	English for exams

Teachers carefully select materials which encourage teamwork and collaboration. Scan the above QR code for more detailed course information.

WHAT WILL I GAIN?

- › Enhance proficiency in all four language skills: listening, reading, writing, and speaking.
- › Improve pronunciation and fluency in spoken English.
- › Expand your English vocabulary.
- › Develop English language skills to communicate more effectively for work or socialising.
- › Foster new international friendships.
- › Obtain a certificate showcasing your attained English level.

Sample  
Timetable for  
GE25



View online



AN INTERNATIONAL COMMUNITY

International House by name, international by nature.

You'll join students from all over the world when you study with us. IH London offers a completely unique language exchange programme between our international and native-speaking students. The monthly exchange connects different people and cultures and enables students to practise their language skills with like-minded, passionate language learners.

Korean  
Language  
Exchange



\*Taken from 2023 data

NEW!

JOB ADVICE WORKSHOPS

At IH London we offer two free workshops a month for students who would like advice about working in the UK. In these practical workshops you will receive personalised advice and discover how to:

- › Write a CV and cover letter that will impress employers
- › Creating a professional social media profile on LinkedIn
- › Understand the UK jobs market and where to find opportunities
- › Develop interview skills that will boost your confidence

More personalised support is available in one-to-one lesson where you can focus on this with a teacher.

STUDENT PORTAL

The online IH London Student Portal is included free with all our Learn English courses, including General English, IELTS and Cambridge Exam Preparation.

- › All course material
- › 250hrs of self-study material via the Student Portal
- › Level testing
- › Progress tutorials
- › Course certificate
- › Free social activities

Student portal

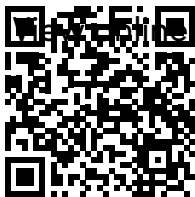




EXECUTIVE CENTRE:

ENGLISH EXPERIENCE 30+

View online



Exclusively for adults aged 30+, you'll explore London with new international friends whilst developing your English language skills.

COURSE SUMMARY

Language level	Minimum A2+
Course length	1-17 weeks
Lessons per week	15 (55 minutes each)
Lesson times	Monday to Friday 09.00 – 12.00
Class size	8 maximum
Age	30 and over
Start dates	08, 15, 22, 29 Jan, 05, 12, 19 Feb 20, 28 May, 03, 10, 17, 24 Jun, 01, 08, 15, 22, 29 Jul, 05, 12, 19, 27 Aug, 02, 09 Sept
Location	<a href="#">London</a>
Refreshments	Included

WHAT WILL I LEARN?

- › Experience London as a learning resource, with learners putting their language into practice regularly while exploring London
- › Develop your English skills in a practical and engaging environment.
- › Receive additional learning support and personalised feedback from a dedicated Academic Manager
- › Join walking tours across London and networking events with other international clients.

WHAT WILL I GAIN?

- › Improve communication confidence and English pronunciation.
- › Apply English effectively in diverse contexts.
- › Improve listening, reading, writing, and speaking skills.
- › Forge international friendships and connections.
- › Gain unique London experiences and lasting memories.



Check out Angela's testimonial



Sample Timetable

BUSINESS

GROUP

View online



Exclusively for business professionals aged 21+, you'll study goal-oriented lessons with London's iconic skyline as your backdrop.

COURSE SUMMARY

Language level	B1 (intermediate and above)
Course length	1 week or more
Course days:	Monday-Friday
Lessons per week	Choose from 15 or 25 (55 minutes each)
Lesson times	Monday to Friday
15 lessons	09.00 – 12.00
25 lessons	09.00 – 12.00 & 13.15 – 15.15
Class size	6 maximum
Age	21 and above
Start dates	Every Monday*
Location:	<a href="#">London</a> or <a href="#">Online</a>
Refreshments	Included

\*excludes UK bank holidays

WHAT WILL I LEARN?

- › Collaborate with the trainer to tailor a course based on shared needs.
- › Benefit from skills that others want to focus on, expanding your knowledge.
- › Gain insight into various companies' task approaches within your sector.
- › Language to help you socialise and communicate in a business context
- › Increase your cross-cultural awareness to be more effective in international business environments

WHAT WILL I GAIN?

- › Access full Executive Centre benefits, including needs analysis, networking, guest speakers, and professional social activities.
- › Learn to communicate effectively in international environments.
- › Gain confidence and proficiency in focused areas.
- › Express ideas with heightened confidence and precision.
- › Expand vocabulary relevant to your professional domain.
- › Form enduring global connections with fellow learners.
- › Develop your language competence and cultural awareness to help you operate more successfully in a business environment.



Check out Kangil Lee's testimonial



Business English



# EXECUTIVE CENTRE: ONE-TO-ONE LESSONS

Learn fast, focused exclusively on your goals, with your own personal tutor.  
Suitable for all students and levels.

## COURSE SUMMARY

Language level	All levels
Course length	Flexible to suit you
Lessons per week	Flexible to suit you (55 minutes each)
Lesson times	Flexible to suit you
Class size	1 maximum
Age	16 and above
Start dates	Flexible to suit you
Location:	<a href="#">London</a> or <a href="#">Online</a>

## WHAT WILL I LEARN?

- One-to-one lessons offer flexibility in pacing, availability and content.
- Define learning outcomes with the teacher for tailored lessons to prepare students to pass an exam, learn Business English and other scenarios.
- Improve your conversation, pronunciation, grammar, and confidence.

Meet your  
Business English  
Coach



View online



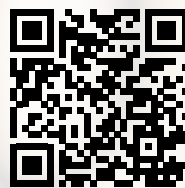
## WHAT WILL I GAIN?

- Rapid progress with focus on specific personal and linguistic goals.
- Enhance fluency and accuracy in communication.
- Acquire strategies for continuous English improvement.
- Address language gaps that require more attention.
- Excel in topics that interest you.
- Boost confidence in interactions with English speakers.
- Receive a certificate showcasing your attained English level.

# PREPARE FOR YOUR ENGLISH EXAM

International House Trust Assessment (IHTA) is one of the largest centres for English language proficiency exams in Europe. We are an accredited centre for IELTS, OET, Cambridge English Qualifications and other exams. We also offer specialised preparation courses for each of these exams:

View online



## YOUR EXAM PATHWAY





IELTS ACADEMIC

PREPARATION

View online



Learn the language and skills to move you up the IELTS scale before you take the test. Suitable for all learners, intermediate and above.

COURSE SUMMARY

Language level	B1 (intermediate) and above
Course length	Choose 4 or 8 weeks per IELTS level
Lessons per week	Choose 15 or 20 (55 minutes each)
Lesson times	Monday to Friday
15 lessons	09.00 – 12.00 or 13.15– 16.15
20 lessons (am)	09.00 – 12.00 and 12.15 – 13.10
20 lessons (pm)	12.15 – 13.10 and 13.15 – 16.15
Class size	12 maximum
Age	16 and above
Start dates	08 Jan, 05 Feb, 04 Mar, 02, 29 Apr, 03 Jun, 01, 29 Jul 02, 30 Sep, 28 Oct, 25 Nov
Location:	<a href="#">London</a>

WHAT WILL I GAIN?

- › Study in the UK's largest IELTS test center with authentic materials for exam preparation.
- › Gain deeper understanding of IELTS Academic principles.
- › Acquire practical strategies across all four skills and test experience in exam-like conditions.
- › Enhance critical thinking and expression in English.
- › Benefit from tutors with IELTS exam experience, providing current examination techniques.
- › Access a priority, in-school exam booking service.



WHAT WILL I LEARN?

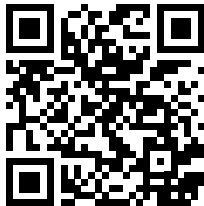
- › Learn essential techniques to advance your IELTS score.
- › Cover all exam sections, receiving strategies and advice for desired scores.
- › Regular progress tests and a full mock test with individual teacher feedback every month.
- › Enhance speaking with diverse language practice.
- › Develop writing skills and analytical abilities for more accurate responses.
- › Engage with varied audio content and academic readings.
- › Expand grammar and vocabulary to boost your score.



IELTS

TEST BOOST

View online



An intensive one week course to boost exam techniques before taking the IELTS test.

COURSE SUMMARY

Language level	B2 (upper intermediate) and above
Course length	1 week
Lessons per week	25 (55 minutes each)
Lesson times	Monday to Friday 09.00– 12.00 and 13.15–15.15
Class size	12 maximum
Age	16 and above
Start dates	15 Jan, 12 Feb, 11 Mar, 15 Apr, 13 May, 10 Jun, 08, 22 Jul, 12 Aug, 16 Sep, 14 Oct, 11 Nov, 09 Dec
Location:	<a href="#">London (part-time online course available)</a>

WHAT WILL I GAIN?

- › Study in the UK's largest IELTS test center, benefitting from practical tutoring and authentic materials.
- › Access a priority, in-school exam booking service.
- › Boost your confidence and IELTS score within a week.
- › Acquire a comprehensive understanding of the IELTS exam and develop strategies to boost scores in all four skills.
- › Learn from tutors experienced in IELTS exams, offering current techniques and best practices.



WHAT WILL I LEARN?

- › Gain skills and strategies to excel in the IELTS test.
- › Intensive one-week course systematically covers each test component.
- › Analyze past papers and authentic materials for effective preparation.
- › Receive examiner's perspective on each test section.
- › Practice a full mock test under exam conditions, with individual teacher feedback to target weaknesses and enhance improvement.





# IELTS STUDY & TEST PACK

NEW for  
2024

Designed to accelerate your learning you'll combine General English study with IELTS Preparation in one convenient package.

## COURSE SUMMARY

Language level	<b>A2-B1 IELTS Study &amp; Test (24 weeks total)</b> 16 weeks General English & 8 weeks IELTS Academic Prep
	<b>B1-B2 IELTS Study &amp; Test (20 weeks total)</b> 12 weeks General English & 8 weeks IELTS Academic Prep
	<b>B2-C1 IELTS Study &amp; Test (16 weeks total)</b> 8 weeks General English & 8 weeks IELTS Academic Prep
Lessons per week	Choose 15 or 20 (55 minutes each)
Lesson times	Monday to Friday
15 lessons	09.00 – 12.00 or 13.15 – 16.15
20 lessons (am)	09.00 – 12.00 and 12.15 – 13.10
20 lessons (pm)	12.15 – 13.10 and 13.15 – 16.15
Age	16 and above
Start dates	08 Jan, 05 Feb, 04 Mar, 02, 29 Apr, 03 Jun, 01, 29 Jul, 02, 30 Sep, 28 Oct, 25 Nov
Location:	<a href="#">London</a>

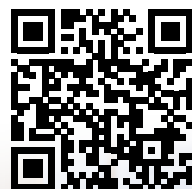
## WHAT'S INCLUDED?

- › 8, 12 or 16 weeks of General English lessons
- › 8 weeks IELTS Academic Preparation
- › 4 Free personalised 1:1 sessions to enhance your IELTS preparation in speaking, listening, reading & writing
- › Mock IELTS testing
- › 1 Free IELTS Academic Test to be taken at IH London at the end of your course
- › All course materials
- › Job skills workshop

## WHAT WILL I LEARN?

Get ready for your exam with our IELTS Study & Test Packages for A2, B1 & B2-level students. Enhance your English language skills through our General English classes, acquire exam strategies and academic language in an IELTS Preparation course, address specific language challenges in four personalised one-hour sessions, and finally sit for your IELTS exam right here at IH London.

View online



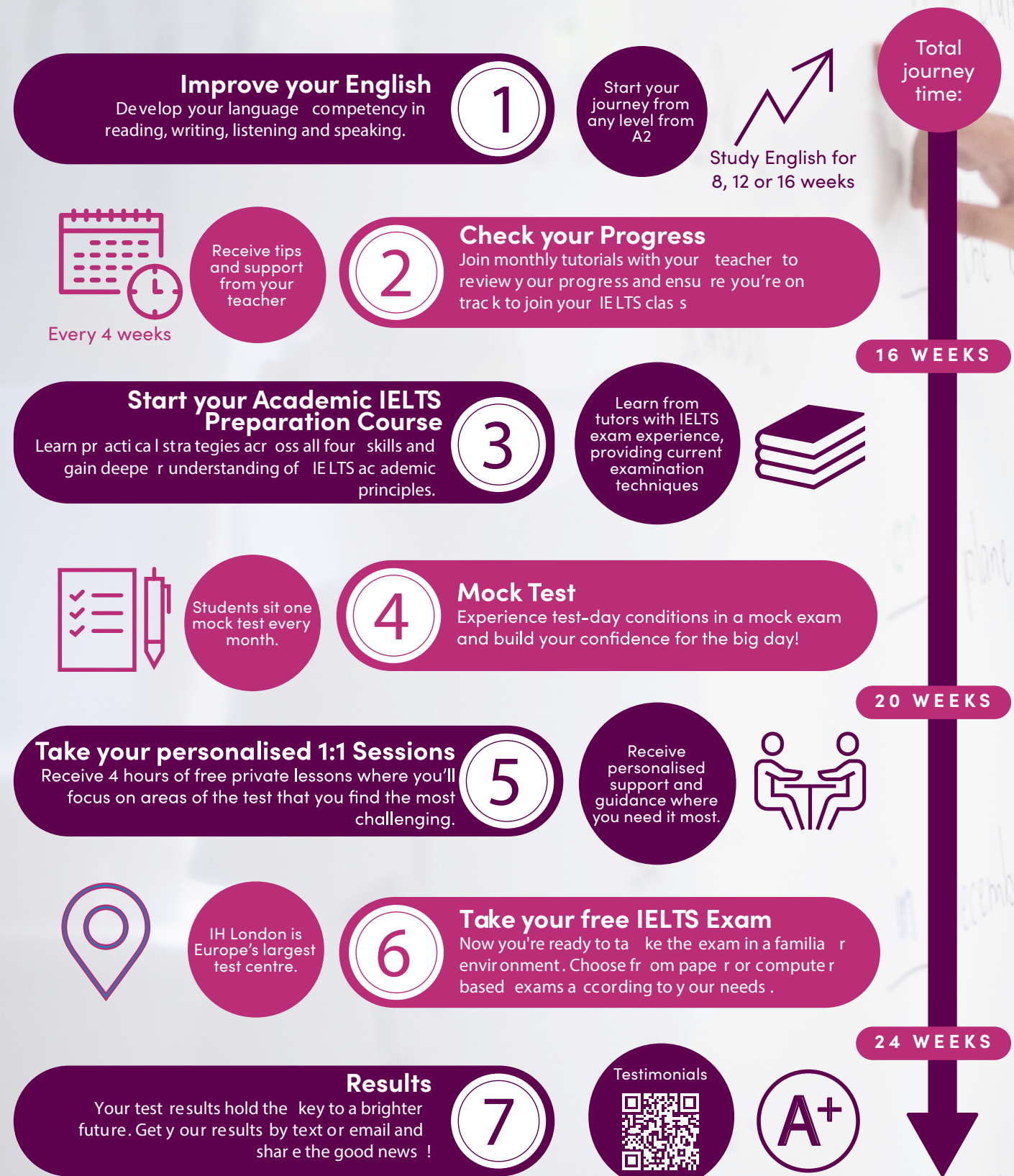
4 Free  
1:1 Tutorials  
included

Jobs skills  
workshop  
included

Free  
IELTS Test  
included

## YOUR STUDY

## AND TEST JOURNEY

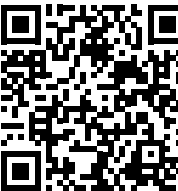




CAMBRIDGE

EXAM PREPARATION

View online



Move through the Cambridge Exams step by step and gain a lifelong English qualification. Suitable for upper intermediate students both online and in London.

COURSE SUMMARY

<b>Language level</b>	
Cambridge First:	B2 (upper intermediate) and above
Cambridge Advanced:	C1 (advanced)
Cambridge Proficiency:	C1 (advanced) to C2 (advanced plus)
<b>Course length</b>	8 weeks in London
	OR
	16 weeks Online
<b>Lessons per week</b>	20 (55 minutes each)
<b>Lesson times</b>	London
	Monday to Friday 12.15 – 13.10 & 13.15 – 16.15
	Online
	Saturdays 10:00 – 13:00
<b>Class size</b>	12 maximum
<b>Age</b>	16 and above
<b>London start dates</b>	
First (B2) & Advanced (C1):	15 Jan, 08 Apr, 24 Jun, 21 Oct
Proficiency (C2):	08 Jan, 15 Apr, 07 Oct
<b>Online start dates</b>	
First (B2) & Advanced (C1):	09 Jan, 26 Mar, 11 Jun, 08 Oct
Proficiency (C2):	02 Jan, 02 Apr, 24 Sep
<b>Location</b>	<a href="#">London</a> or <a href="#">online (part-time only)</a>

WHAT WILL I LEARN?

- › Acquire exam techniques and strategies to succeed.
- › Participate in a full mock exam with teacher feedback every month.
- › Engage in diverse topic discussions to enhance fluency and accuracy.
- › Focus on varied writing aspects to develop versatile writing styles.
- › Improve listening and comprehension across different topics.
- › Read and comprehend a range of texts, from news items to reports and articles.

WHAT WILL I GAIN?

- › Approach Cambridge exams with confidence, aiming for your best possible score.
- › Practical instruction and authentic test materials for exam preparation.
- › Access a priority in-school exam booking service.
- › Develop effective face-to-face communication for exchanging opinions and presenting arguments.
- › Polish persuasive writing skills, crafting arguments, letters, reports, and articles.
- › Receive a certificate showcasing your attained English level.



CAMBRIDGE ENGLISH  
Language Assessment

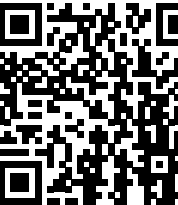
Authorised Centre



OET

PREPARATION

View online



An intensive course focused on the skills, language and techniques healthcare professionals need for the OET exam. Designed specifically for Doctors and Nurses to achieve their best possible OET score.

COURSE SUMMARY

<b>Language level</b>	B2 (upper intermediate) and above
<b>Course length</b>	1 week
<b>Lessons per week</b>	30 (55 minutes each)
<b>Lesson times</b>	Monday to Friday 09.00 – 12.00 and 13.00 – 16.00
<b>Class size</b>	12 maximum
<b>Age</b>	16 and above
<b>Start dates</b>	OET course dates are offered regularly throughout the year. (Please scan the QR code to see dates on the website)
<b>Location:</b>	<a href="#">London</a> or <a href="#">Online</a>

WHAT WILL I LEARN?

- › Acquire strategies and techniques to attain your desired OET grade.
- › Engage in a mock test under exam conditions, receiving personalized feedback.
- › Study each exam component with regular progress tests.
- › Enhance speaking using diverse medical language.
- › Develop writing skills and analytical abilities for date and patient records.
- › Listen to various medical talks, lectures, and conversations.
- › Read a broad range of medical texts, including reports and patient letters.
- › Expand grammar and medical vocabulary.

WHAT WILL I GAIN?

- › Gain deeper OET exam understanding and confidence.
- › Expand your medical language repertoire.
- › Enhance fluency in communicating with patients and families.
- › Develop critical and contextual thinking in written and spoken English.
- › Deploy strategies to enhance all four test skills: listening, reading, writing, speaking.
- › Access a priority, in-school exam booking service.





## STUDENT

## ACCOMMODATION

### HOMESTAYS

Experience true cultural immersion and live with an English-speaking host family. Homestays are a comfortable, safe and affordable way to live whilst studying at IH London. You'll embrace British culture at mealtimes and when relaxing with your host.

**Age:** 16+

**Commute:** Up to 55 mins (Zone 2-4).

**Meals:** B&B only, B&B with 4 evening meals OR B&B with 7 evening meals.

**What's included:** Bills, bed linen, towels and one load of laundry per week.

#### STANDARD

Private bedroom with shared bathroom.

#### SUPERIOR

Larger private bedroom with shared bathroom.

#### EXECUTIVE

Exclusive, premium decor style room with private bathroom.

Watch our Student Stories



View online



## RESIDENCES

### TUFNELL PARK

Located in this quiet, leafy suburb in Zone 2, Tufnell Park gives you a countryside feel and neighbourhood charm with easy access to central London. The surrounding area has great independent food and drink establishments and a few excellent live music venues, with the buzz of Camden nearby.

**Room info:** Bronze en-suite with a shared kitchen.

**Commute:** 30 mins

- Wi-fi included
- Laundry available (small fee required)
- Bed linen included (bring own towel)
- Meals - self-catered
- Utilities - all bills included
- Bathroom - private en-suite with toilet, sink and shower
- Kitchen facilities - shared kitchen with a fridge, freezers, electric hobs, ovens, kettles, microwave, and all kitchen equipment.
- Gym



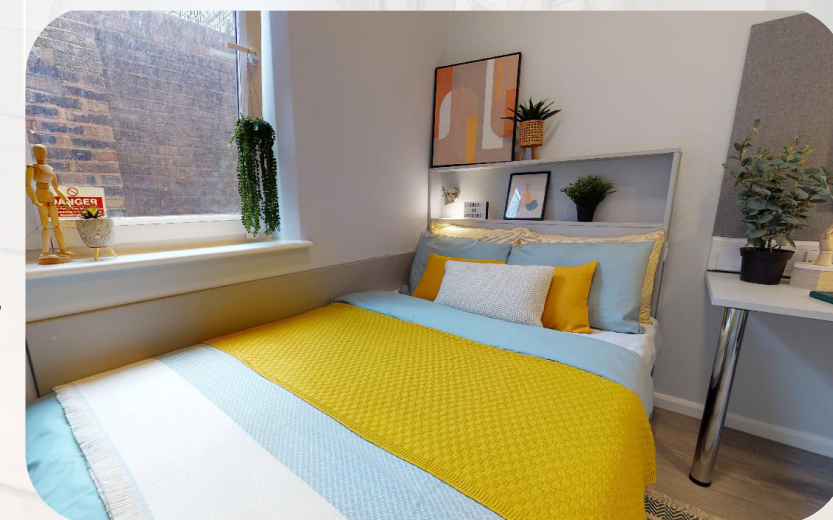
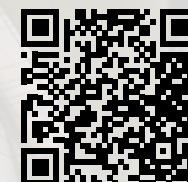
### OLD STREET

Located in Zone 1, Old Street is near London's vibrant Hoxton and Shoreditch districts in East London. You'll have plenty of entertainment at your doorstep with iconic areas like Brick Lane waiting to be discovered, and Shoreditch Park just down the road.

**Room info:** Silver en-suite room with a shared kitchen.

**Commute:** 35 mins

- Wi-fi included
- Laundry available (small fee required)
- Bed linen included (bring own towel)
- Meals - self-catered
- Utilities - all bills included
- Bathroom - private en-suite with toilet, sink and shower
- Kitchen facilities - shared kitchen with a fridge, freezers, electric hobs, ovens, kettles, microwave, and all kitchen equipment.





PORTOBELLO

Portobello, located in Zone 2, is a modern student residence near popular Notting Hill area. This quiet neighbourhood is just a short walk away from the famous Portobello Road Market and has excellent links to many parts of central London.

**Room info:** Bronze en-suite studio with a private kitchen.

**Commute:** 45 mins

- Wi-fi included
- Laundry available (small fee required)
- Bed linen included (towels not included)
- Meals - self-catered
- Utilities - all bills included
- Bathroom - private en-suite
- Kitchen facilities - private kitchenette
- Gym
- Cinema



KINGS CROSS

Kings Cross, located in Zone 1, is well known for being one of London's most exciting and well-connected neighbourhoods with excellent transport links across the city, country, and the rest of Europe.

**Room info:** Bronze en-suite studio with a private kitchen.

**Commute:** 15 mins

- Wi-fi included
- Laundry available (small fee required)
- Bed linen included
- Meals - self-catered
- Utilities - all bills included
- Bathroom - private en-suite
- Kitchen facilities - private kitchenette
- Gym
- Cinema



TESTIMONIALS

“

Amazing experience, I met a lot of friends from all over the world and the classes allowed me to be more comfortable speaking in English.

★★★★★ by Matthieu

“

The teachers were fantastic! I made some friends from around the world. The school building is very beautiful and it is really well located. Great experience!!

★★★★★ by Paula

“

The teachers were good and very active. And the classrooms were very clean. The Social Programme was super impressive, which was my favourite thing during my studying at IH London.

★★★★★ by Viera

“

It was greatly helpful for me. Teaching was absolutely the best and the teacher was really really kind to me. The administration staff helped me really a lot. Thank you so much indeed International House London!

★★★★★ by Jaehoon

“

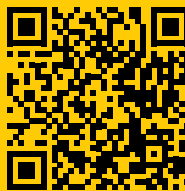
I have known International House is the best language school in London. I am very lucky that I have studied here and also made a lot of friends of different nationalities here. The teachers are very responsible and thoughtful and could be the most professional I have ever seen.

★★★★★ by Donghong

Watch our Student Stories



★ Trustpilot





## Contact us:

Online: [ihlondon.com/contact](https://ihlondon.com/contact)  
Telephone: +44 (0)20 7611 2427  
Email: [sales@ihlondon.com](mailto:sales@ihlondon.com)  
Find out more online: [ihlondon.com](https://ihlondon.com)

16 Stukeley Street  
Covent Garden  
London WC2B 5LQ

 [facebook.com/ihlondon](https://facebook.com/ihlondon)  
 @IHLondon  
 [linkedin.com/company/international-house-london](https://linkedin.com/company/international-house-london)  
 [youtube.com/IHLondonSchool](https://youtube.com/IHLondonSchool)  
 [instagram.com/ihlondon](https://instagram.com/ihlondon)  
 ihlondon  
 @ihlondon  
 The PALLATT podcast



Accredited by the  
 BRITISH COUNCIL  
for the teaching  
of English in the UK